



Support the European R&I eco-system around connected & automated driving

1st European Conference on Connected and Automated Driving
**Session "Research and Innovation Challenges of Connected
and Automated Driving"**
Brussels, April 3rd-4th 2017

Dr. Jean-Luc di Paola-Galloni
Operational Vice-Chairman of ERTRAC
Grp VP Sustainability & External Affairs,
Valeo

ERTRAC is the European Technology Platform (ETP) for Road Transport recognized and supported by the European Commission.

ERTRAC has more than 50 members, representing all the actors of the Road Transport System: transport industry, European associations, EU Member States, local authorities, European Commission services, etc.



ERTRAC Roadmap on Automated Driving



2015: first joint roadmap on vehicle automation between OEMs, suppliers, research actors, infrastructure providers, cities, Member States

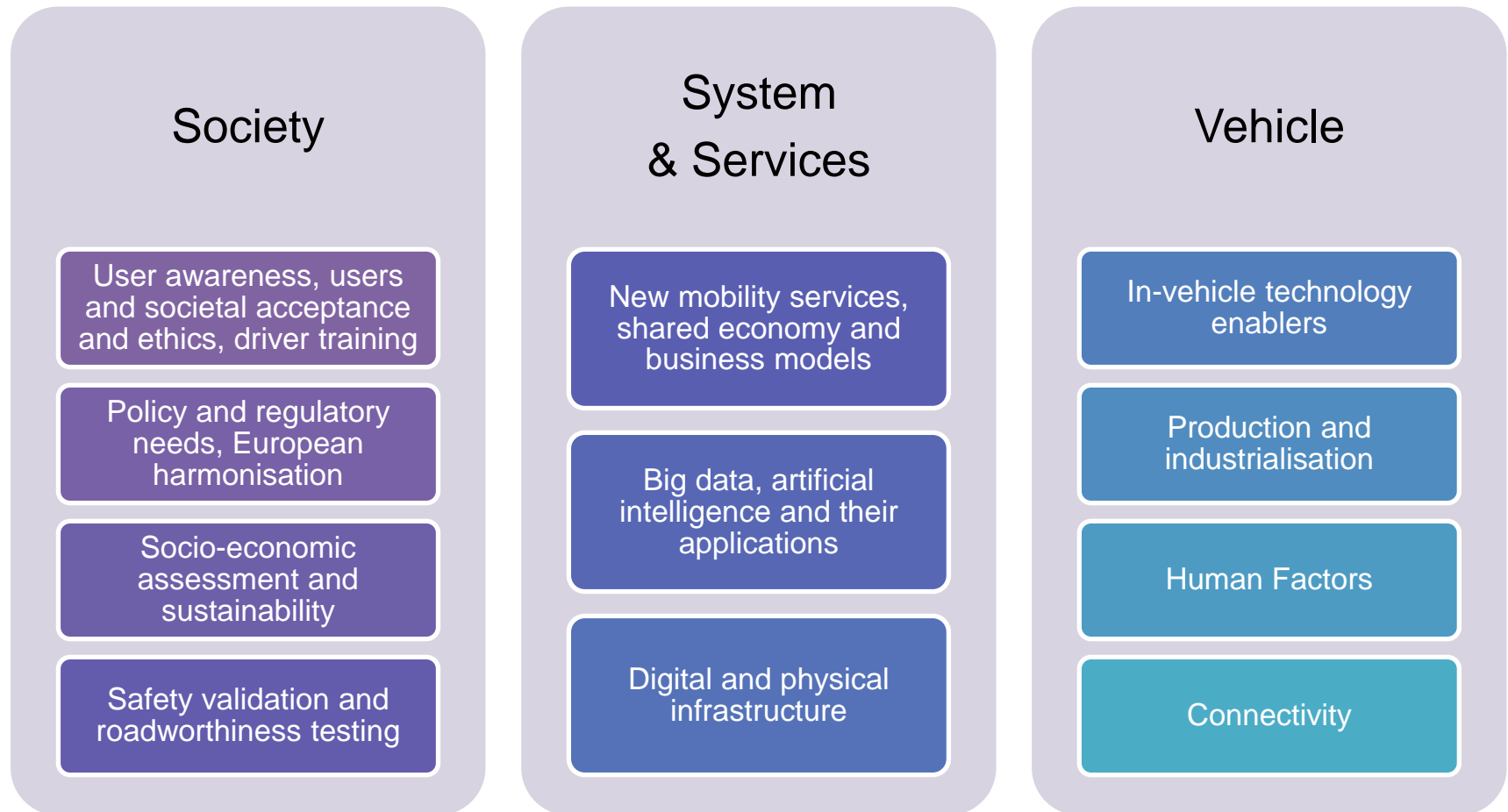
2017 status: draft of updated version distributed today at the conference (→ERTRAC stand)

Open for public consultation:
You are invited to participate!

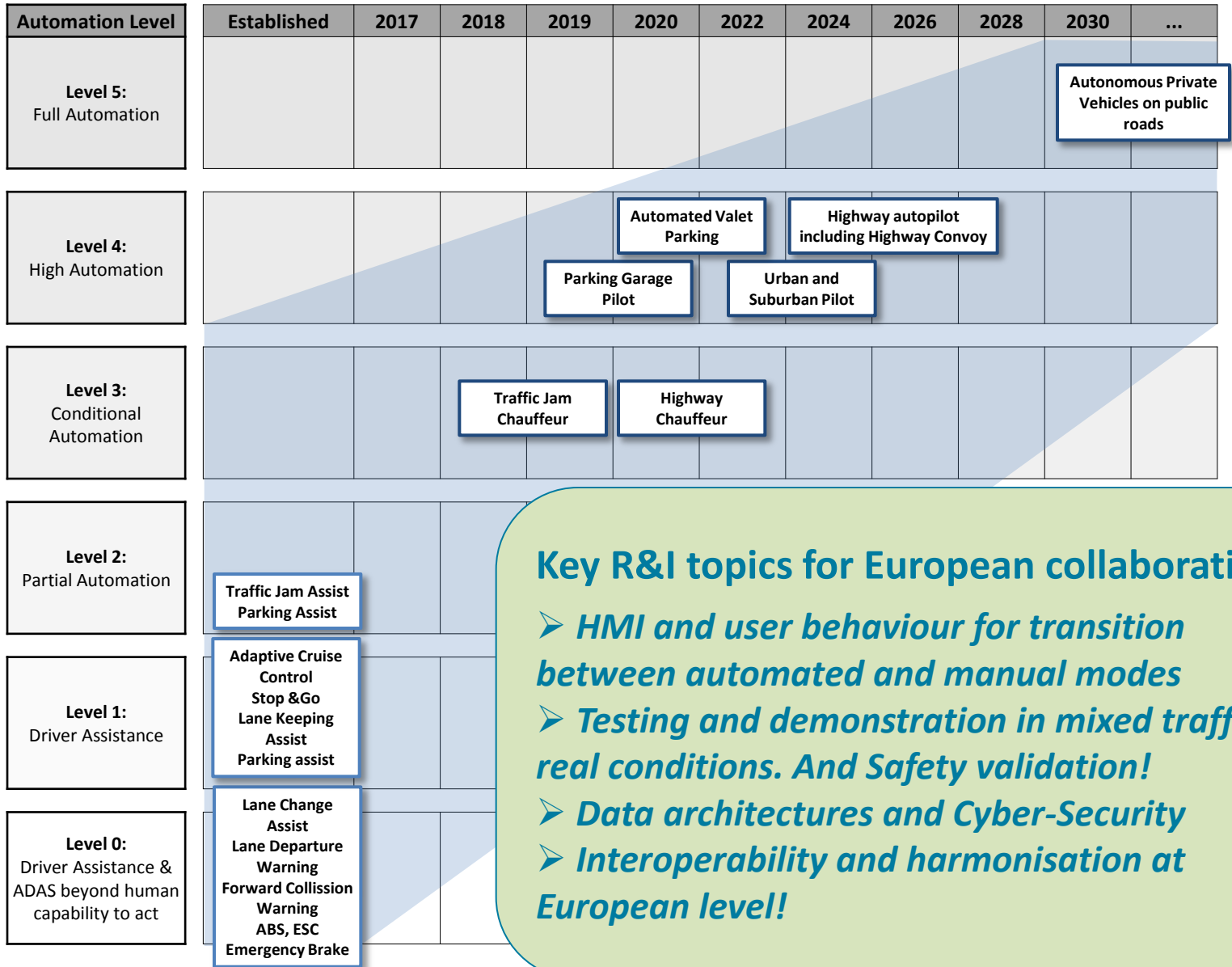
Final version at ITS Strasbourg (June 2017)

ERTRAC

Key R&I areas for collaborative research on automated driving*



Automated Passenger Car Development Path



Automated Freight Vehicle Development Path

Automation Level	Established	2017	2018	2019	2020	2022	2024	2026	2028	2030	...
Level 5: Full Automation				Autonomous vehicles confined areas			Autonomous vehicles on dedicated lanes/roads/areas			Autonomous Hub-to-Hub on public roads	
Level 4: High Automation					Truck Terminal Automation		Highway pilot with ad-hoc Platooning		Highly Automated Trucks on public roads		
Level 3: Conditional Automation				Traffic Jam Chauffeur	Highway Chauffeur						
Level 2: Partial Automation				Traffic Jam Assistance							
Level 1: Driver Assistance				Adaptive Cruise Control Stop & Go Lane Keeping Assist							
Level 0: Driver Assistance & ADAS beyond human capability to act				Lane Change Assist Lane Departure Warning Forward Collision Warning ABS, ESC Emergency Brake							

Key R&I topics for European collaboration:

- From confined areas to open roads, and towards hub-to-hub complete logistic chain
- Implementation in multi-brand/multi-fleet real logistics operations
- Integration with infrastructure and with other road users
- User acceptance: resilience and cost!

Automated Urban Mobility Vehicle Development Path

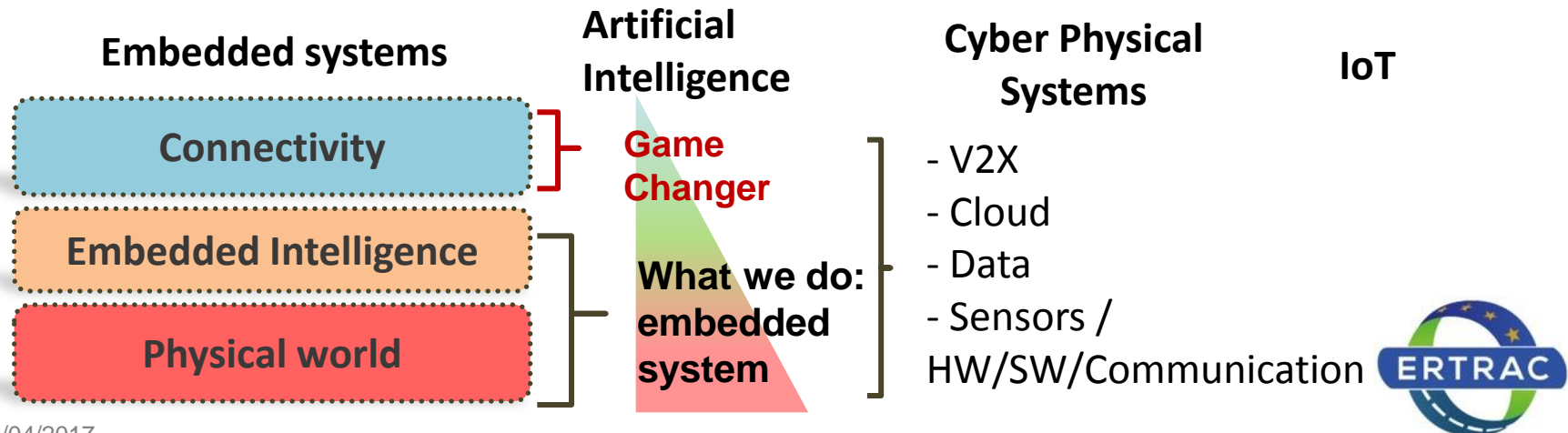
Automation Level	Established	2017	2018	2019	2020	2022	2024	2026	2028	2030	...
Level 5: Full Automation											Autonomous Taxi
Level 4: High Automation		Automated PRT and last mile taxis in low speed			PRT in dedicated lane		Cybercars Last-mile taxis			Automated Bus/PRT in mixed traffix	
Level 3: Conditional Automation											
Level 2: Partial Automation		Traffic Jam Assist Parking Assist									
Level 1: Driver Assistance		Adaptive Cruise Control Stop & Go Lane Keeping Assist									
Level 0: Driver Assistance & ADAS beyond human capability to act		Lane Change Assist Lane Departure Warning Forward Collision Warning ABS, ESC Emergency Brake									

Key R&I topics for European collaboration:

- *Implementation of automated solutions in the Public Transport System of cities*
- *Enhanced mobility for all: automated solutions for impaired and elderly users*
- *Integration in the Urban Mobility System e.g. with other transport modes*
- *Impact assessment and user acceptance!*

Tackling the challenge of R&I on connectivity

- Game changer in the automotive sector is the connectivity: in the vehicle systems / outside the vehicle (V2X) and is the key enabler of automation level 4/5,
→ connectivity needs to be further addressed in European R&D, taking in account the various actors / sectors (automotive, semicon, telecoms, etc.) Link with J.U.



ERTRAC perspective on funding for automated & connected driving in Europe

Horizon 2020 funding for Automation of Road Transport (ART call): **114 Mn € for WP 2016-2017**

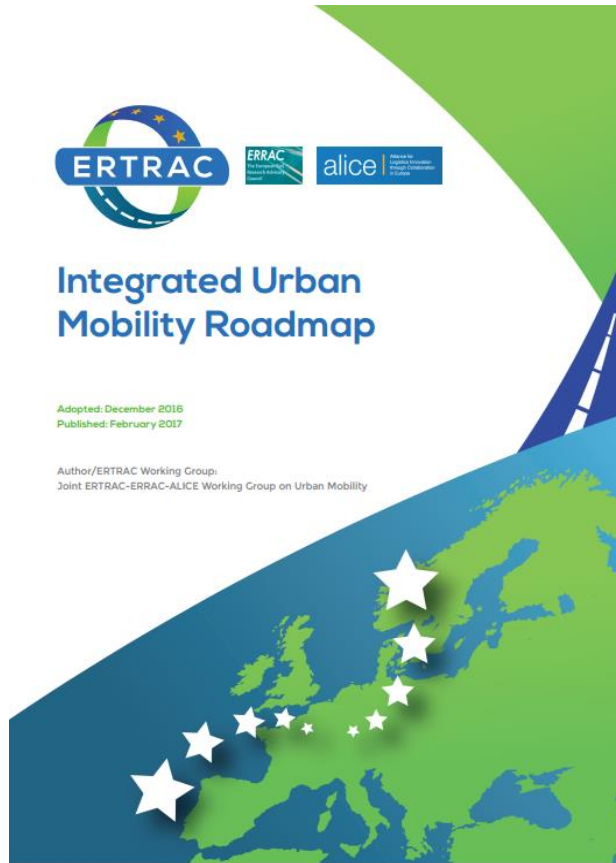
➤ *High response from the industry, the research community and the national and local authorities*

ERTRAC calls for a **similar level of support** in the next **H2020 Work Programme 2018-2020**

Next funding period (FP9): need a specific initiative like a **Contractual Public Private Partnership** to give a long-term perspective and a strong dedicated budget for **Automated Driving R&I** in Europe



ERTRAC perspective on Urban Mobility: new Roadmap 2017






Urban mobility and connected & automated driving: support cities for infrastructure development

- Growing demands of cities and habitants for life-quality in cities (air quality, less congestion, etc.) and re-definition of mobility in cities
 - Automation paving the way to answer social demand (life-quality) and multimodal mobility
 - Need for work on infrastructure for automated / connected mobility
- Need to support European cities beyond testing on automated driving
 - Most of funding projects were linked to testing (City2Mobil, etc.),
 - Infrastructure funding / decision is a State / EU level decision : need for a coordination action between the EU cities
 - Need for infrastructure development in cities (automation / connectivity), taking in account the scalability of research,
 - Need for coordination role of the Commission in line with city needs

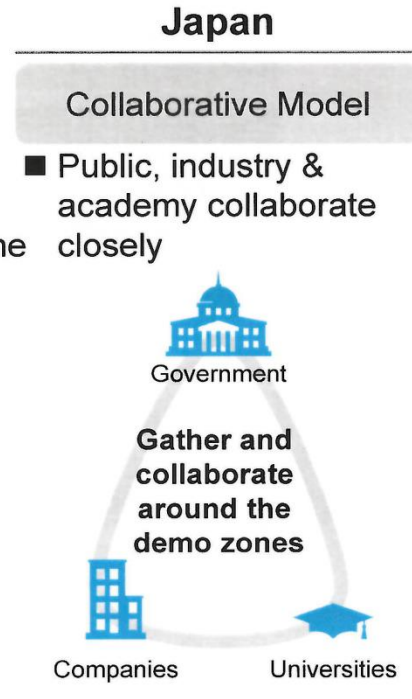
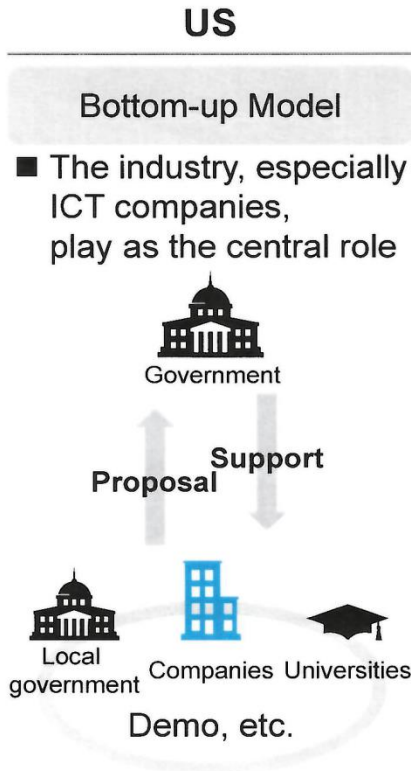


Smart Mobility Initiatives around the World

Legends




 Main Drivers

US
Europe
Japan
China



Not limited to R&D, real world demonstrations are actively conducted around the world

*1: EC = European Commission



- **EU R&I funding** can act as enabler to support European actors to get strong market positions worldwide
- **Strong international competition** (USA, China, Japan) calls for a European coordinated approach in addition to national and local initiatives
- **Multi-sector R&I approach** to bring together European industries: automotive, telecom, electronics, data,...
- Need a **long-term and dedicated R&I funding scheme** at European level => PPP initiative in FP9
- **+ Link with the existing funding schemes:** EGVI, ECSEL, 5G, Cyber-Security, Photonics, etc., which contribute to develop enabling technologies for automation and connectivity.

Visit Ertrac stand in the Exhibition area!

Contact:

ERTRAC Office

66 avenue de Cortenbergh 1000 Bruxelles

+32 2 736 1221

info@ertrac.org

www.ertrac.org

